



chatham islands council

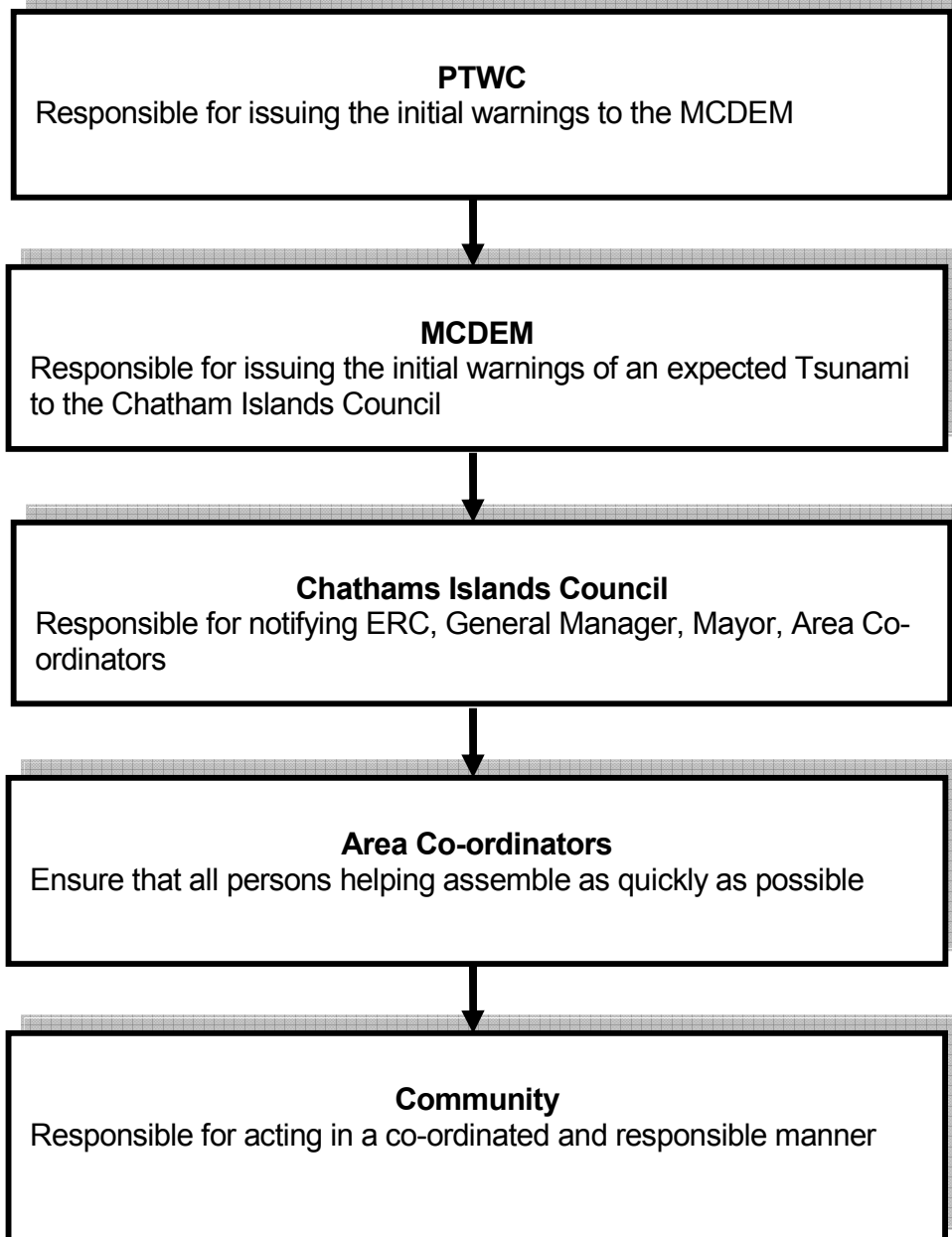
TSUNAMI WARNING PLAN

Completed 2005
First Review 2006
Second Review 2007

TABLE

TSUNAMI WARNING PROCESS	2
INTRODUCTION	3
CONFIRMATION – ACTION	4
EVACUATION AREA MAP	6
SPECIFIC ACTION	7
CONTACT LIST	9
COMMUNICATION NETWORK MAP	10
BE PREPARED	11

TSUNAMI WARNING PROCESS



TSUNAMI WARNING PLAN

INTRODUCTION

A tsunami is a natural phenomenon consisting of a series of waves generated when large volumes of water in the sea, or lakes are rapidly displaced. Tsunami waves can travel across deep ocean basins at speeds in excess of 500 kilometres per hour, however distance source tsunami require large source disturbances to cause damage at great distances, local tsunamis don't, numerical modelling indicates the Chatham Islands are vulnerable to tsunami triggered by ruptures of the Hikurangi subduction zone off the east coast of the North Island. Tsunami waves differ from usual waves breaking on the beach or in 'Deep Ocean'; tsunami waves occupy the whole ocean depth and not just the top few tens of metres as in storm waves. When tsunami waves reach shore, they continue to flood inland over many minutes, and then the waves may retreat over as many minutes before the arrival of the next wave. Waves may come in at irregular intervals, often without complete withdrawal of the inundating water from previous waves due to retardation of the outflow and impoundments, the first wave to arrive may not be the largest wave. Historical records show the Chatham Islands have also received large South American source tsunami, and during the 1868 Peru Tsunami; the Chatham Islands recorded the highest level in New Zealand at 10 metres and the only fatality. So it is to this end the Chatham Islands Emergency Management has developed a Tsunami Warning Plan in accordance with the CDEM Act 2002 and CDEM Group Plan 2005, having identified potential hazards; Tsunami local or distant have a high risk impact for the Chatham Islands. Pre-planning and public education are a major factor for an effective evacuation, local warning systems such as "warning Sirens" in all major areas is another. The purpose of this Plan is to ensure that all precautions have been taken for the safety and well-being of the community and emergency personnel. The Nature and effectiveness of the tsunami warning system may vary according to the length of time available to impact.

*Note: Ref; to data as recorded in the Review of Tsunami Hazards and Risk in New Zealand by GNS.

CONFIRMATION ACTION

PRE - CONFIRMATION

When a tsunami is suspected the Emergency Response Co-ordinator (ERC) will:

	Advise the Controller, Deputy Controller, Area Co-ordinators and emergency personnel via phone that a possible tsunami may affect the Chathams and to standby whilst confirmation is sought.
	Contact MCDEM National Duty Officer to confirm validity of the warning. Keep the phone line open.
	Put the Emergency Operations Centre (EOC) on 'Standby'

POST - CONFIRMATION

When a tsunami is confirmed via MCDEM or other verified source (e.g. Met service Chathams) the Emergency Response Co-ordinator (ERC) will:

	Put the Emergency Operation Centre on Full Activation – see Emergency Contact list
	Advise the Controller, Deputy Controller, Area Co-ordinators and emergency Personnel that a tsunami will affect the Chathams and to activate their responsibilities under this plan.
	Emergency Response Co-ordinator assist the Mayor in making a declaration for all the Chatham Islands-to enable powers of movement of people and closure of roads and facilities.
	Follow the Evacuation Plan attached.

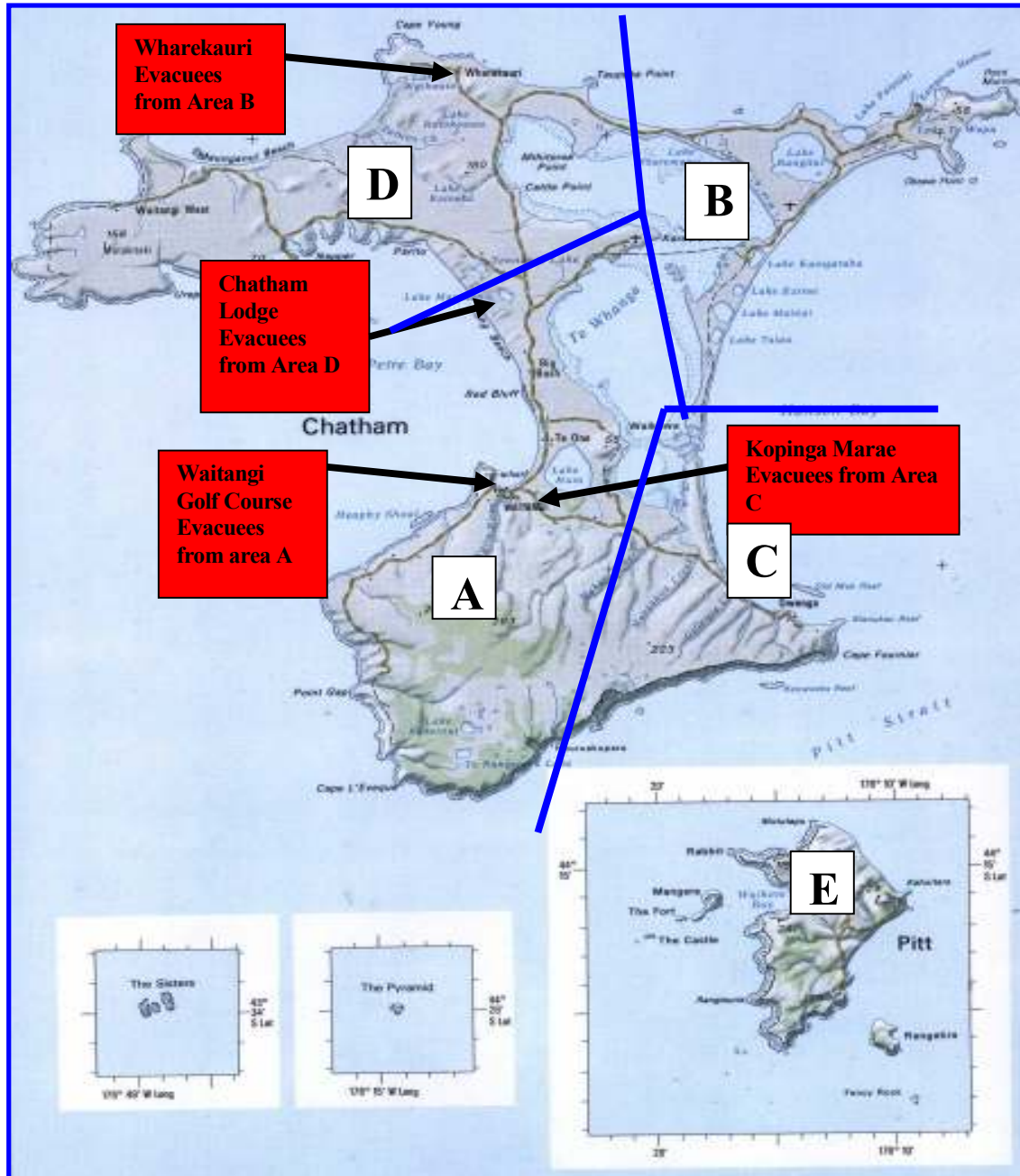
PRIORITIES

Getting all people out of harms way to a safe area and accounting for them is the priority. The protection of property is only a secondary priority where warning time may permit.

***Note:**

In the absence of the Emergency Response Co-ordinator the Council staff will carry out the notification process and follow the above procedures.

EVACUATION AREA MAP



SPECIFIC - ACTIONS

CHILDREN AT SCHOOL - GENERAL

The Emergency Operation Centre (EOC) will inform all Schools of the warning. Principals and teachers remain responsible for children in transit to assembly areas, until such time that they relinquish to authorised caregivers.

CHILDREN AT SCHOOL – SPECIFIC ACTIONS

- Te One School: Principal to transport all children to [.....safe area A] and inform area coordinator of school's complete evacuation.
- Kaingaroa School: Parent to uplift en-route to safe area, and Principal to inform area coordinator of school's complete evacuation.
- Pitt Island School: Children to proceed immediately home.

TRAFFIC CONTROL- POLICE GENERAL

When a State of Civil Defence Emergency is declared the Police shall provide adequate direction and control of all persons and transport in the threatened area. Care should be taken not to hinder people returning to their homes to evacuate their families. Control of traffic at other points may be necessary and the decision to do this will be made after an assessment of the situation by the Controller.

TRAFFIC CONTROL- POLICE SPECIFIC ACTIONS

- Confirm that wharf facilities are evacuated and place road closure signage on Wharf Rd at top of the hill.
- Confirm that the Hotel Chathams premises are evacuated and place road closure signage at top of the hotel road.
- Confirm that Processing plant premises and adjacent housing are evacuated and place road closure signage at top of the road.

EOC – OPERATIONS MANAGER

- Monitor time (countdown) until expected tsunami impact and keep Controller and Area Co-ordinators informed, especially of any changes.
- Physically have the impact sighted and confirmed (e.g. from Kopinga).
- Support the Controller's decision making; by liaising with MCDEM to assess secondary wave and follow-up wave action for assessing when the 'all clear' and a return home should be communicated [this judgement call could be as little as 15 minutes after a minor occurrence or up to 24 hrs following major sea activity].

WELFARE CENTRE CO-ORDINATORS

At each designated safe area, the Welfare Co-ordinator will register evacuees, and report any missing persons to the Area Co-ordinator, and then provide evacuees with welfare support –see Welfare Standard Operating Procedure (SOP).

CONTACT LIST

Emergency Operation Centre Personnel

	Name	Wk Ph	Fax	Hm Ph	Sat
Co-ordinator	Rana Solomon	3050033	3050044	3050277	008816214654 80
Controller	Patrick Smith		3050144	3050144	
Recovery	Owen Pickles	3050033	3050044	3050149	
Operations	Alfred Preece	3050019	3050267	3050267	
Logistics	Fire Chief	3050111		3050271	
Planning Intel	DOC Manager	3050098	3050376		
Welfare	Shirley King			3050070	

CDEM Group

Title	Name	Phone	Fax	Email
Mayor	Patrick Smith	3050144	3050144	
Council	Alfred Preece	3050267	3050267	
Council	Eva-Cherie Tuck	3050377		
Chief Fire Officer	Steve Joyce	3050271	3050271	
Police	Police	3050334 3050335	3050410	
Hospital	Jamie Preston	3050035	3050120	chat-hamdr@xtra.co.nz
E.Trust	Don McLaren	3050066	3050248	
DOC	Manager	305098	3050376	
St Johns	Glenise Day	3050210	3050210	
Finance/CIC	Deborah Goomes	3050099	3050044	deborah@cic.govt.nz
ERC/DPRFO	Rana Solomon	3050277	3050044	rana@cic.govt.nz
General Manager CIC	Owen Pickles	3050149	3050044	owne@cic.govt.nz

*Elected Members

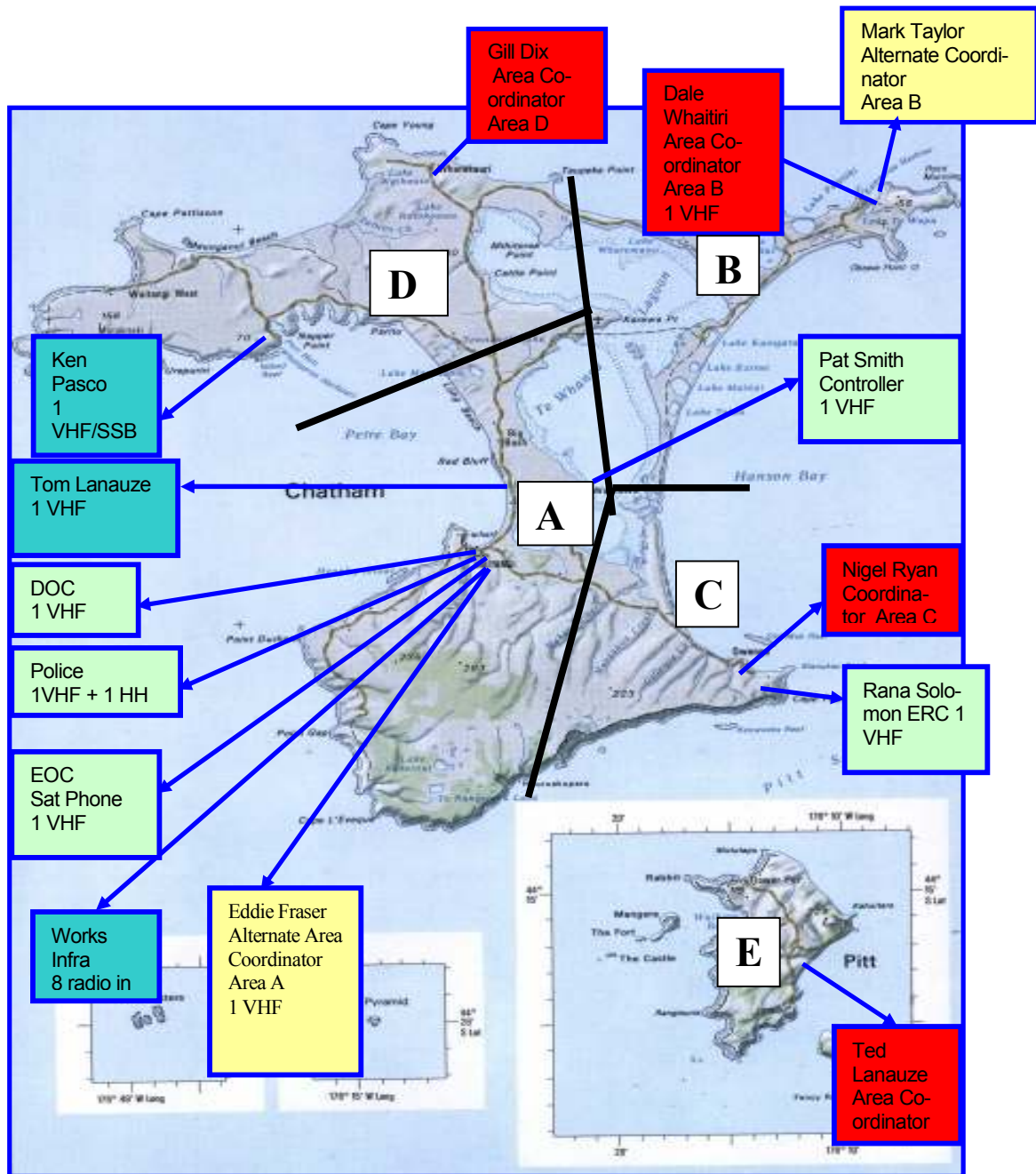
Message CDEM Group and Emergency Personnel:

“Please be advised we have received a Tsunami Warning from the Ministry of Civil Defence and Emergency Management, (MCDEM)”

- **Please proceed to the Emergency Operations Centre for activation.**
- **You will be updated at the Emergency Operation Centre**
- **This is NOT a TEST**
-

*Please note this message will be the only information that will be given over the phone at this time, as there are more people to be contacted. You will be updated once you are at the EOC, it is important to clear the phone lines as soon as possible.

COMMUNICATION NETWORK



BE PREPARED

TESTING THE WARNING SYSTEM

- Once warning systems are installed the system will be tested no less than once a month. Maintenance on all systems to be carried out when necessary to ensure system is in good working order.
- The testing of the system will be the responsibility of the Emergency Management Office.
- The maintenance is the responsibility of the Chatham Islands Council.
- Check lists for maintenance will be filled out at the time of maintenance and monitored by the Emergency Management Office.

AREA CO-ORDINATORS KEY RESPONSIBILITIES

Area Co-ordinators play a vital role in an emergency, and have key responsibilities including;

- Are familiar with the evacuation/safe areas location and who will be the person co-ordinating the safe area, in the event of a tsunami?
- It is advisable that Area Co-ordinators have a group of volunteers that can assist them in the event of an emergency, and that these volunteers have access to the training provided by the CDEM/Council.
- It is recommended that the Area Co-ordinators have a register of people living within their areas; this will ensure no one is left behind.
- It is recommended that Area Co-ordinators intending to go off the Island to please inform the Emergency Management Office, so that time is not wasted looking for someone that's not on the Island.
- Keep up to date of any changes made to any standard operating procedures, continuance plans.