

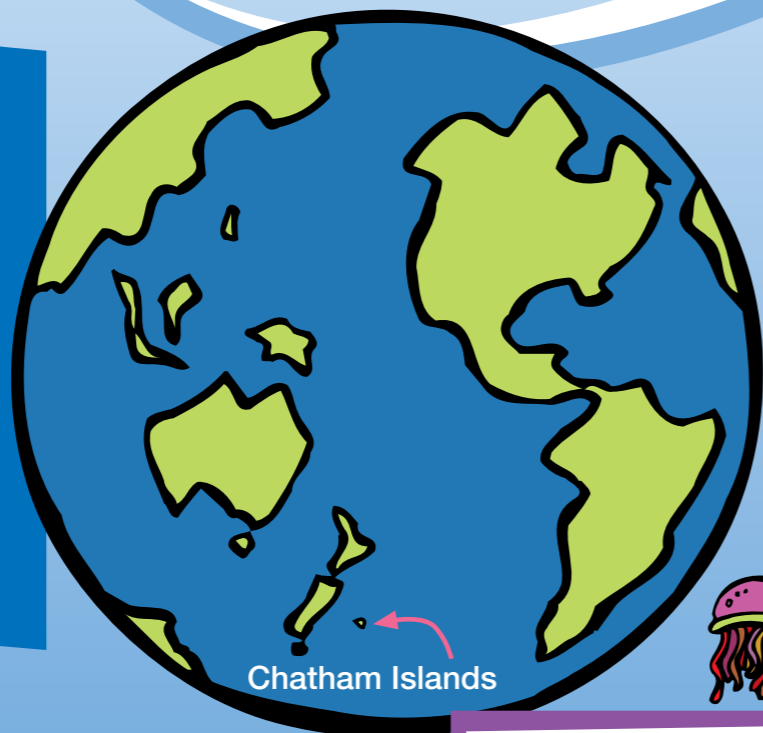
One Ocean - it starts here!

When looking at an atlas or at the actual ocean itself have you ever wondered where the ocean finishes?

Well, the simple answer is ... it doesn't! As the waves break and the water laps up over your toes imagine that, via currents around the globe, that very water may have been circulating itself on an amazing world tour.

The ocean is one big inter-connected mega world ocean.

It can seem way too big to harm, but all our actions do affect the ocean in some way.



Chatham Islands

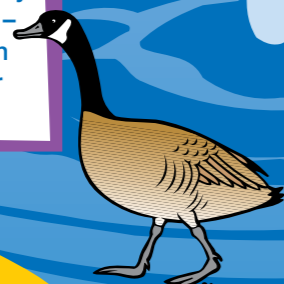


All marine mammals are fully protected in the waters of the Chatham Islands.



The Chatham Islands are situated in the Pacific Ocean, the largest body of water on the planet taking up 1/3 of the Earth's surface.

The coastal environment is very fragile and changes quickly - we must learn to treat it with the respect we give to other special environments.



The ocean takes up 71% of the Earth's surface.

Smaller regions of the ocean are called seas, gulfs and straits.

Think before you 'sink' it!
The ocean is the final 'sink' for many chemicals. Everything that goes down the drain eventually ends up in the ocean and becomes part of the food chain.

Greener cleaner
Make sure the drop you add to the ocean is a good one - make your cleaners 'greener'.

It's the little things
Be mindful of the big problems but focus on solving them through the little things you do each day to help reduce them.

Furniture polish

Mix 1 tablespoon olive oil and 2 teaspoons of vinegar or lemon juice with 2 cups of warm water in a glass spray bottle.

Design and attach a label with a list of ingredients and instructions that says "For varnished wood. Heat mixture gently by setting bottle in a pan of hot water. Shake bottle after heating. Apply polish to wood and rub dry with a soft cloth".

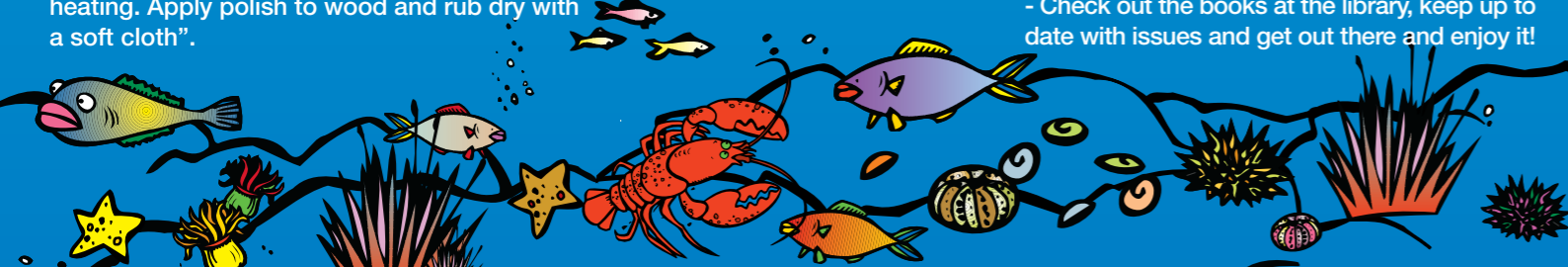
Glass cleaner

Fill a spray bottle with half vinegar and half water, shake to mix. Design and attach a label that says "Apply to glass then rub with newspaper".

Protect the things you love

Take time to learn about the ocean. This will help you develop a love and respect for it and all the creatures and plants that interact to make up the marine environment.

- Check out the books at the library, keep up to date with issues and get out there and enjoy it!



UNIQUELY

Chathams

Issue 2 • August 2008

Uniquely Chathams is a quarterly newsletter about the environment for the Chatham Islands community.

Chatham Islands' seafood the best



Nigel Ryan with some of his catch.

Being surrounded by the sea has a huge impact on our lifestyle, environment and economy. Along with farming, commercial fishing is the mainstay of our economy and employs about 75% of the people living here. Ensuring that the food gathered from the seas is sustainable is essential to ensuring its viability, now and into the future.

Crayfish, blue cod, kina and paua are all exported from the islands, reaching the Australian and Asian markets via New Zealand. "Crayfish is on the menu at Marconee Seafoods," says owner Nigel Ryan. The company exports about 80 tonnes a year.

"The colder water here means a better quality of cray. People in New Zealand probably wouldn't understand that we sometimes get sick of eating crayfish!" he says.

Blue cod is also a key export and is very popular in New Zealand. "Because it's a seasonal fish, however, the export market is limited," says Nigel, who is also a councillor at the Chatham Islands Council. In the off-season during summer the cod are full of jelly while they are spawning and hard to catch.

About 35 fishing boats are based on the islands, catching crays and wet fish, and then about 15 dive for paua and kina. Most of the seafood is transported to New Zealand either live or chilled by air while about 10% is shipped frozen to either Timaru or Napier.

Nigel has noticed an abundance of crayfish over the past few years and blue cod also appears to be sustainable with most fishers being able to catch their quotas.

With the reduction of fisheries in Golden Bay and Southland, Nigel and the rest of the fishing industry are concerned about an influx of vessels from New Zealand. "Fishers from Lyttelton and Timaru could come to the Chathams since their quota is within Area 4 but we wonder about other boats catching here and not declaring where

...continued on page 2



chatham islands council

9 Tuku Road, Waitangi, PO Box 24, Chatham Islands 8942

Phone: (03) 3050-033 or 3050-034

Email: info@cic.govt.nz

www.cic.govt.nz

Working towards a sustainable future for our people and our islands.

...continued from page 1



the fish have come from. It is really important that our fisheries aren't depleted so that they are around for our future generations," he says.

"Marine pests are not too much of a worry. Our seas are pristine and strong tides from the south and north means we are usually unaffected by marine pests," says Nigel.

The low mercury levels compared to seas near Japan and America are a plus for businesses exporting seafood from the Chathams.

"A clean environment definitely pays when it comes to our exports. Our wet fish, crayfish and other shellfish definitely taste better from the Chathams – but maybe I'm biased," says Nigel.

About 35 fishing boats and 15 dive boats are based on the Chathams.

fact

Sealing and whaling industries ceased activities on the Chathams about 1861.

Community works on safe future for endangered seabird

The Chatham Island taiko (Magenta Petrel) is one of the world's most endangered seabirds. The Chatham Island Taiko Trust was established in 1998 to conserve the Chatham Island taiko as an integral part of the biodiversity of the Chatham Islands.

To conserve the endangered seabird and prevent them from being killed by introduced predators, chicks are translocated and raised in the Sweetwater predator-free enclosure. During a school trip to the enclosure earlier this year, the children saw recently translocated taiko and Chatham petrel chicks. The petrel chicks were weighed and fed during their visit.

The Chatham Island taiko breeds only on the Chatham Islands, with an estimated population of around 150 individuals. There are just 16 known breeding pairs that are in the forest of the Tuku and surrounding areas. All 13 translocated chicks successfully fledged this year from Sweetwater. The taiko has a wingspan of around one metre and spends its entire life at sea, feeding in the subtropical waters between South America and the Chatham Islands.

Without the continuing work of the Chatham Island Taiko Trust, the Department of Conservation and the many volunteers, the taiko's chances of survival would be greatly reduced.



The taiko is one of the world's most endangered seabirds and is found only on the Chatham Islands.



School student Tiare Day Jones with a Chatham petrel during a school visit. He is pictured with volunteer Sue Freitag (left) and Helen Gummer, a DOC contractor who is in charge of the feeding programme.

fact

The total ocean area belonging to the Chatham Islands is 500 square km. That is nearly 50,000 rugby fields.

Coastal plan for islands

The Chatham Islands Council is planning to update the coastal plan for the Chatham Islands in the near future.

Management of resources, sustainability, climate change and its associated rising sea levels and erosion, will all be covered in the updated plan.



South East Island with Pitt Island in the background.

Photograph taken by Don Merton, Crown Copyright. Reprinted with permission from the Department of Conservation 2004.

fact

Rekohu is the Moriori name and Wharekauri is the Maori name for the Chatham Islands.

Clean seas could provide new opportunity

The colder waters and pristine marine environment surrounding our islands means there could be an opportunity for marine farming. However there are several issues around establishing marine farms on the islands.

"Creating aquaculture on the islands is complicated due to regulations about establishing new marine farms", says senior resource planner David Gregory from Environment Canterbury.

David recently visited the islands to make a presentation about the process to establish aquaculture. "The New Zealand Coastal Policy Statement is under review and could influence whether marine farms could be set up here," David says. "The islands' limited number of sheltered waters could also be an issue along with the distance and cost to the market."

"Aquaculture can use sea cages to catch wet fish while shell fish can be farmed. Unfortunately some popular shellfish such as green lip mussels do not exist on the Chathams and because of biosecurity issues cannot be introduced. Some seaweeds or sea cucumbers may have potential," says David.

"The Aquaculture Reform Legislation places new responsibilities on local councils," says Chatham Islands Council general manager Owen Pickles. "On the other hand it also provides new



Potential species for marine farming on the Chathams could include sea cucumber or seaweeds.

opportunities for our council to work with the aquaculture industry to develop the Coastal Marine Area. Aquaculture New Zealand, has been a great support and is happy to help with advice.

"From our initial discussions, we now need to find out from the islanders whether there is an interest in marine farming," he says.

"At the end of the day it needs to be environmentally and economically viable for the Chatham Islands community."

UNIQUELY
Chathams

The Chatham Islands: a community that protects, sustains and enriches the environment for future generations and that promotes economic development for its fishing, farming and tourism industries.

Wharf crucial link

Owenga Wharf will be rebuilt if funding is approved by Land Transport New Zealand. The funding application was based on the importance of the wharf as a crucial strategic transport link to Pitt Island.

